

The background is an abstract, painterly composition with warm, earthy tones of orange, yellow, and brown. It features a dense network of thin, dark, branching lines that resemble roots or veins. There are several large, soft, circular shapes in shades of yellow and orange, giving it a bokeh-like effect. A faint, light-colored world map is visible in the lower right quadrant, partially obscured by the text.

mylva
PROFESSIONAL CATALOGUE 2026

be green, be *mylva*

MYLVA is an **ISO 14064-certified** company, an international standard that establishes the basis for accrediting and guaranteeing the calculations in our company's **Greenhouse Gas report**.

Our R&D centre, the **Mateu Picas Research Centre**, recently expanded to 500m², allows us to constantly innovate in order to achieve smarter and more sustainable pest control.

At **MYLVA**, we continue **to grow with you**

mylva

Growing together



Magnumgel <small>by mylva</small>	05
Ultimatumpest <small>by mylva</small>	08
Pyrenat <small>by mylva</small>	18
ëQual EnviroCare <small>by mylva</small>	30
K.O. rat <small>by mylva</small>	32
Serpolgel <small>by mylva</small>	40
ëQual Birds® <small>by mylva</small>	44

ëQual <small>by mylva</small>	16
MasterTrap Pine <small>by mylva</small>	20
Thermicide <small>by mylva</small>	22
MasterTrap <small>by mylva</small>	24
Magnët <small>by mylva</small>	27
Bedefender PLUS <small>by mylva</small>	29

Accessories	46
-------------	----

Magnumgel

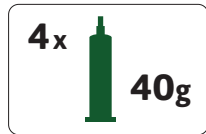
The EVOLUTION of »»» ANT AND COCKROACH CONTROL «««



PRODUCTS APPROVED AND REGISTERED UNDER EU BPR.

Magnum Gel Cockroaches IGR PLUS with IGR

Insecticide gel for cockroach control



100% recycled plastic pack



More precise measurement of gel consumption

Characteristics

Gel bait, highly palatable and efficient.

Effective against **nymphs** and for **adults**.

The **imidacloprid** neonicotinoid insecticide affects the nervous system, causing paralysis and death.

The **s-methoprene**, an active ingredient that is an analogue of the insects' juvenile hormone, presents an ovicidal action in the ootheca stopping the development of the next generation.

Dosage

German cockroach (*Blattella germanica*) 0,12-0,16 g/m²
(3-4 spots/m²)

American cockroach (*Periplaneta americana*) 0,16-0,24 g/m²
Oriental cockroach (*Blatta orientalis*) (4-6 spots/m²)

Composition

Imidacloprid 2,15%
(S)-methoprene 0,50%
Bitrex 0,008%
Food ingredients q.s.p. 100%

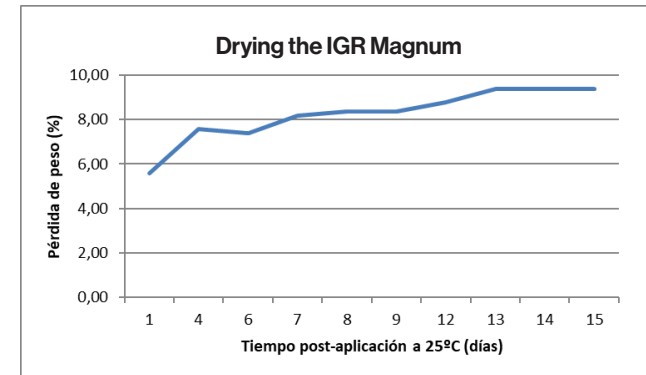
Biocide registration ES/APP(NA)-2021-18-00746

Reentry period None

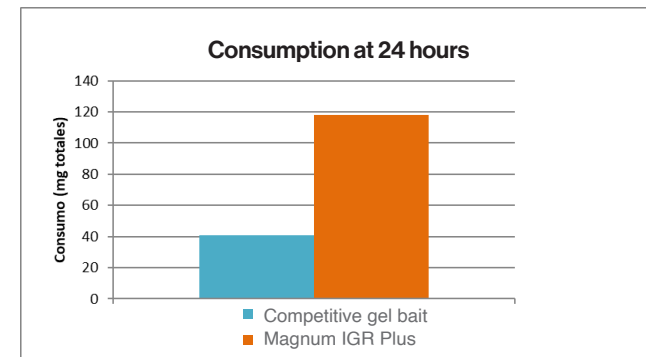
WITH **SAFE CAP**
DOUBLE OPTIMIZATION



Drying of Magnum IGR < 10% loss



Superior palatability of Magnum IGR



To be used with a Bait Gun: Ref. 3131



46



Magnum Gel Optimum

Insecticide gel for cockroach control

**AGAINST
AVERSION
TO SUGARS**

 WITH **SAFE CAP**
DOUBLE OPTIMIZATION

 4x
35g


100% recycled plastic pack



More precise measurement of gel consumption

Characteristics

MAGNUM GEL OPTIMUM, with food-matrix formula free from components that could generate aversion, is also extremely palatable. The mortality that MAGNUM GEL OPTIMUM generates growth in the days following its application.

If pest population shows early signs of aversion to standard gel bait formulations available on the market, MAGNUM GEL OPTIMUM is the recommended choice for effective control.

Dosage

German cockroach (*Blattella germanica*) 0,12-0,16 g/m²
(3-4 spots/m²)

American cockroach (*Periplaneta americana*) 0,16-0,24 g/m²
Oriental cockroach (*Blatta orientalis*) (4-6 spots/m²)

Composition

Imidacloprid 2,15%
Bitrex 0,008%

Biocide registration ES/APP(NA)-2017-18-00469

Reentry period None


 To be used with a
Bait Gun: Ref. 3131


46

Magnum Gel Ants IGR PLUS

Insecticide gel for ant control

 with
IGR

 4x
40g


100% recycled plastic pack



More precise measurement of gel consumption

Characteristics

Highly attractive gel bait.
Distributed throughout the ant colony via trophallaxis.
Insecticidal effect on **adults and larvae**.
(S)-methoprene acts on the fertility of queen ants.

Dosage

Application of one dose of 0,2 g/m²

Composition

Imidacloprid 0,01%
(S)-methoprene 0,08%
Bitrex 0,008%
Food ingredients q.s.p. 100%

Biocide registration ES/APP(NA)-2017-18-00448

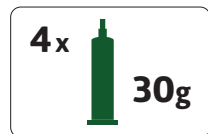
Reentry period None


 To be used with a
Bait Gun: Ref. 3131


46

Ultimatum | Magnum Gel Cockroaches

Insecticide gel for cockroach control



100% recycled plastic pack



More precise measurement of gel consumption

Characteristics

Gel bait, highly palatable and efficient. Effective against **nymphs** and for **adults**. **1 hour delayed action**. More complete and effective control due to secondary intoxication

Dosage

German cockroach (*Blattella germanica*) 0,12-0,16 g/m² (3-4 drops/m²)

American cockroach (*Periplaneta americana*) 0,16-0,24 g/m² (4-6 drops/m²)
Oriental cockroach (*Blatta orientalis*)

Composition

Imidacloprid 2,15%
Bitrex 0,008%
Food ingredients q.s.p. 100%

Biocide registration ES/APP(NA)-2017-18-00449
PT/DGS ARMPB-32/2017

Reentry period None



To be used with a Bait Gun: Ref. 3131

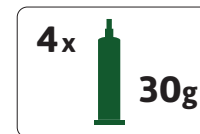


46



Ultimatum | Magnum Gel Ants

Insecticide gel for ant control



100% recycled plastic pack



More precise measurement of gel consumption

Características

Specific gel bait to ant species. Gel bait highly attractive to both, sugar and protein feeding ant species.. It is distributed in the ants' nest via trophallaxis. Specially designed formula with delayed lethal effect.. Particularly for:

- *Linepithema humile* (Argentine ant)
- *Lasius niger* (Black garden ant)
- *Monomorium pharaonis* (Pharaoh ant)

Dosage

Application of one dose of 0,2 g/m²

Composition

Imidacloprid 0,01%
Bitrex 0,008%
Food ingredients q.s.p. 100%

Biocide registration ES/APP(NA)-2017-18-00448
PT/DGS ARMPB-31/2017

Reentry period None



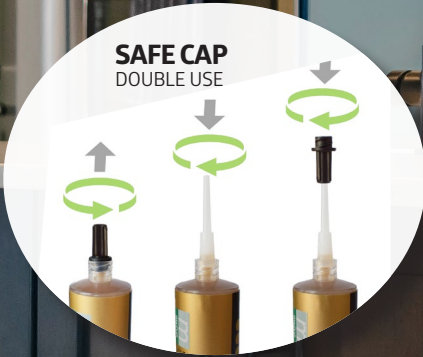
To be used with a Bait Gun: Ref. 3131



46

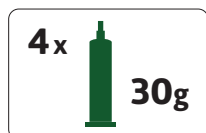


ULTIMATUM ●●●●●●●●●● Pest THE GOLDEN SOLUTION



Ultimatum Gel Cockroaches

Insecticide gel for cockroach control



100% recycled plastic pack



More precise measurement of gel consumption

Characteristics

Gel bait, highly palatable and efficient utilising the power of fipronil. Both for **nymphs** and for **adults**.

1 hour delayed action. More complete and effective control with no need to lengthen the treatment

Dosage

German cockroach (*Blattella germanica*) 0,12-0,16 g/m²
(3-4 drops/m²)

American cockroach (*Periplaneta americana*) 0,16-0,24 g/m²
Oriental cockroach (*Blatta orientalis*) (4-6 drops/m²)

Composition

Fipronil (CAS NO. 120068-37-3) 0,05%
Inerts: 99,95%

Biocide registration EPA Reg. N° 92028-4 -92418

Reentry period None



To be used with a
Bait Gun: Ref. 3131

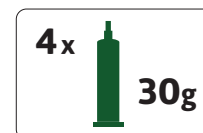


42

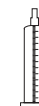


Ultimatum Gel Ants

Insecticide gel for ant control



100% recycled plastic pack



More precise measurement of gel consumption

Características

Specific gel bait to ant species. Gel bait highly attractive to both, sugar and protein feeding ant species..

It is distributed in the ants' nest via trophallaxis.

Specially designed formula with delayed lethal effect..

Particularly for:

- *Linepithema humile* (Argentine ant)
- *Lasius niger* (Black garden ant)
- *Monomorium pharaonis* (Pharaoh ant)

Dosage

Application of one dose of 0,2 g/m²

Composition

Imidacloprid 0,01%
Bitrex 0,008%
Food ingredients q.s.p. 100%

Reentry period None



To be used with a
Bait Gun: Ref. 3131



42



Ultimatum | Magnum Disk One

5g block for professional sewer treatment



50 x  5g



Characteristics

Solid bait in cylindrical form for controlling *Periplaneta americana* and *Blatta orientalis*. Insects cannot detect the active ingredient present in the disc. Its 5g disc format allows for better adjustment of the necessary dosage, optimising treatments and their results.

Resistance to pathogens

Magnum Disk One is highly resistant to common pathogens found in our cities' sewerage and sanitation networks, such as bacteria, fungi and yeasts.

Benefits

Magnum Disk One is specifically designed for *Periplaneta americana* and *Blatta orientalis*, ideal for maintenance and follow-up treatments. It offers long-lasting durability, maintaining its stability and attractiveness, which reduces both the time and number of applications. It is also resistant to moisture and fungal contamination.

Instructions for use

Place the product in labelled bait stations in areas where insects are present or proliferate.

American cockroach (<i>Periplaneta americana</i>)	1-2 disks every
Oriental cockroach (<i>Blatta orientalis</i>)	10-15m ²
	1-2 disks/manhole

Composition

Cypermethrin 40/60	0,23%
Food ingredients q.s.p.	100%

Biocide registration

Environmental: 20-30-10415 / Food Industry: 20-30-10415-HA

Reentry period None

Most recommended months for use



SEWERS



MANHOLES



SEPTIC TANKS



FALSE CEILINGS



Disk One Holder

To be used with Ultimatum Disk One

NEW

Characteristics

Bait holder suitable for sewers to facilitate the placement of **Magnum Disk One**. Tray with small channels and slope to prevent water accumulation. Raised tube on the tray to facilitate access to the product. Central rod for easy placement and prevent movement or falling of the product. Easy to place and handle.

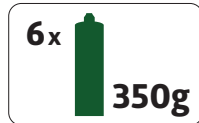
Dimensions

Tube (approx. 10 cm with lid) / tube + access space (approx. 12 cm with lid) / tray (11x7 cm)



Ultimatum | Magnum Gel One

Insecticide gel to for cockroach control in sewer systems



Characteristics

It is an insecticide gel developed using advanced multilayer technology, which masks the active ingredient cypermethrin so that insects cannot identify the source of their poisoning.

The formula has been designed as a food bait specifically for *Periplaneta americana* and *Blatta orientalis*. Its high attractiveness to these insects, combined with its specific physical and structural properties, make **Magnum Gel One** a product specially designed for subsoils.

Resistance to pathogens

Magnum Gel One is highly resistant to common pathogens found in our cities' sewerage and sanitation networks, such as bacteria, fungi and yeasts.

Dosage

Magnum Gel One is specifically designed for common sewer species, remaining effective for a long time. Its high adhesion power allows it to be applied to smooth and vertical surfaces. In addition, it requires fewer cartridge changes, reducing application time, and has no safety period.

Instructions for use

American cockroach (<i>Periplaneta americana</i>)	1 cartridge de 350 g
Oriental cockroach (<i>Blatta orientalis</i>)	30 linear meters Up to 50 manholes (moderate infestation)

Composition

Cypermethrin 40/60	0,6%
Bitrex®	0,008%
Food ingredients q.s.p.	100%

Biocide registration Environmental: 20-30-10315 // Food Industry: 20-30-10315-HA

D.G.S registration 1922S

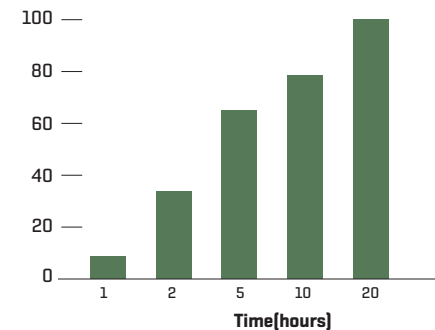
Reentry period None



Effectiveness

Mortality test (in laboratory) for *Periplaneta americana* for 24 hours.

% mortality



To be used with a Bait Gun: Ref. 3139



46

To be used with a Bait Gun: Ref. 3135



46



Ultimatum | Magnum Gel Compact

Insecticide gel for cockroach control



12 x 20g



Characteristics

Gel bait, highly palatable and efficient.
Effective against **nymphs** and for **adults**.
1 hour delayed action. More complete and effective control with no need to lengthen the treatment.

Dosage

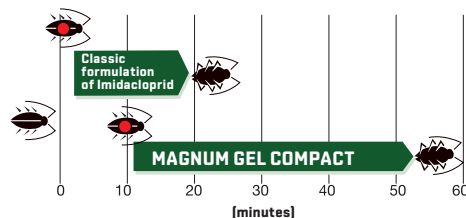
German cockroach (<i>Blattella germanica</i>)	0,12-0,16 g/m ² (3-4 spots/m ²)
American cockroach (<i>Periplaneta americana</i>)	0,16-0,24 g/m ² (4-6 spots/m ²)
Oriental cockroach (<i>Blatta orientalis</i>)	

Composition

Imidacloprid	2,15%
Bitrex	0,008%
Food ingredients q.s.p.	100%

Biocide registration	ES/APP(NA)-2017-18-00449 PT/DGS ARMPB-32/2017
-----------------------------	--

Reentry period	None
-----------------------	------



Ultimatum | Magnum Gel compact reusable bait stations

Ready-to-use refillable bait station with insecticide gel for cockroaches & ants control



CAPSULE

1 trap + 3 capsules

Characteristics

Easy capsule activation
Recyclable trap
Refill capsules



Demo Suitcase Infinity

Professional gel toolbox

1 unit



Characteristics

Ergonomic case
Secure fastener
Robust exterior

Space for:

- 1 x 300g cartridge
- 4 x 40g cartridges
- 100 adhesive traps
- 4 applicator nozzles



Ultimatum | Magnum Gel Cockroach Bait Station

Ready-to-use traps with insecticide gel for cockroaches

Boxes of 90 traps
30x
3 de 2,5g



Characteristics

The insecticide gel station is ready to use and attracts cockroaches with food attractants. Upon consuming the gel, they die shortly afterwards due to its delayed effect, eliminating both nymphs and adults in a practical and effective manner.

Instructions for use



Place in areas where cockroaches are likely to pass through (false ceilings, kitchens, toilets, pantries, under electrical appliances, etc.). It is recommended to place 2-4 traps per room, depending on the degree of infestation.

Composition Ultimatum^{pest}

Fipronil (CAS NO. 120068-37-3)	0,05%
Inerts	99,95%

Authorization EPA Reg. N° 92028-4 -92418

Composition Magnumgel

Imidacloprid	2,15%
Inerts	0,008%
Food ingredients q.s.p.	100%

Biocide registration ES/APP(NA)-2021-18-00449

Biocide registration PT/DGS ARMPB-32/2017

Reentry period None



Ultimatum | Magnum Gel Ant Bait Station

Ready-to-use bait station with insecticide gel for ants control

Cases of 96 traps
32x
3 de 5g



INDOOR
OUTDOOR



Characteristics

The station contains an insecticide gel that is ready for immediate use. Ants are attracted to the inside of the station by the food attractants present in the gel. Once inside, they ingest the gel and carry it back to the nest, where they feed it to the queens and larvae through trophallaxis. The gel begins to work after a few hours, effectively eliminating the entire colony, making this system a highly practical solution for controlling ant infestations.

Instructions for use

Place in areas where ants pass (indoors or outdoors), avoiding direct exposure to sun or rain.

Dosage

At least 1 trap per area of activity (increase depending on the level of infestation)



1. Open the trap. Snap off the edge by pressing the pre-cut line. 2. Activate the trap. By squeeze the capsule until the gel has been deposited in the central compartment. 3. Place the trap where the presence of ants has been detected.

Dimensions

112x40x20mm

Composition

Imidacloprid	0,01%
Bitrex	0,008%
Food ingredients q.s.p.	100%

Biocide registration ES/APP(NA)-2017-18-00448
PT/DGS ARMPB-31/2017


Reentry period None



Ultimatum Contact Gel

Contact insecticide gel for effective control of cockroaches, bed bugs and ants.



24x  300ml

Characteristics

This white gel insecticide is designed to control all types of walking or crawling insects, such as cockroaches, ants, and bedbugs. Its effectiveness and persistence are maintained over a long period, ensuring prolonged control.

How does it work?

It adheres to the body of insects and is absorbed through the cuticle or by ingestion during the insect's hygiene routine.

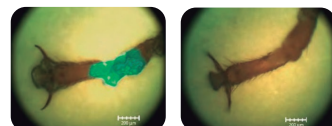
It spreads to other insects through contact, controlling insects that have never been to the place where the product was applied.

Dosage

Apply **Ultimatum Contact gel** using **trip application**, at a rate of 25 to 35 mL per linear metre. A 300 ml cartridge of **Ultimatum Contact Gel** is suitable to cover a surface between 10 and 15 linear metres



The photos presents how **Ultimatum Contact Gel** adheres to the insect as the insect cannot get rid of the products that adheres to its body, the gel is being effectively absorbed through the cuticle.



Magnification of one of the legs of german cockroach before and after exposure to **Ultimatum Contact Gel** (it has been coloured for a better visibility).

Composition

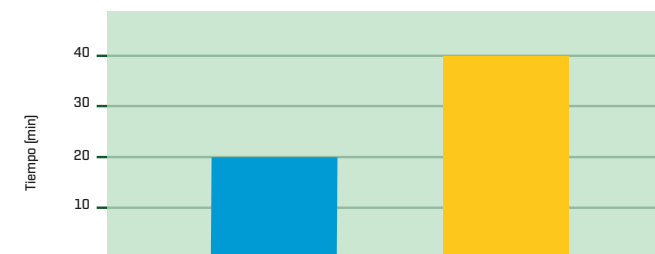
Cypermethrin 40/60	0,25%
Food ingredients and demineralised water q.s.p	100%

Biocide registration Environmental: 20-30-10414 / Food Industry: 20-30-10414-HA

Reentry period No tiene



Ultimatum Contact Gel is up to ten times more effective in controlling *Blattella germanica* than traditional film forming formulations..



To be used with Bait Gun: Ref. 3139



127

Application nozzle: Ref. 3379



127

Ultimatum CIPER EW

Emulsifiable insecticide for flying and crawling insects



Bottle with
MEASURING DEVICE



Characteristics

It is rapidly absorbed **through the cuticle** of arthropods. Very good shock effect (**displacement + knockdown**). Combats **almost all insects that cause problems** in environmental, industrial and food hygiene.

Ideal for controlling: flies, mosquitoes, wasps, bedbugs, spiders, moths, silverfish, mites, etc.

Dosage

Ambiental: Pulverización o nebulización

Alimentaria: Pulverización

Dose of use

5L medium/100m²

1L/100L in water (strong infestation)

1L/200L in water (moderate infestation)

1L/400L in water (light infestation)

Composition

Cypermethrin 40/60	10,80%
Food ingredients q.s.p.	100%

Biocide registration

Environmental: 20-30-10412 // **Food:** 20-30-10412-HA

Reentry period

12 hours



Ultimatum CIPER RTU

Ready-to-use liquid insecticide



Bottle with
MEASURING DEVICE



ALSO FOR
DOMESTIC USERS

Characteristics

Recommended to control **flying** and **crawling insects**.

Authorised for **indoor and outdoor use**.

Quick knockdown effect.

Dosage

Localised and targeted spraying to sockets and floors

Composition

Cypermethrin 40/60	10,80%
Tetramethrin	0,02%
Food ingredients q.s.p.	100%

Environmental health registration

23-30-11990

Reentry period

None



ëQual
by mylva



100% FREE OF INSECTICIDES

**A PLANT-SAFE TOOL DESIGNED FOR OUTDOOR AND INDOOR PROFESSIONAL PEST MANAGEMENT.
TARGETS BOTH, ADULT AND JUVENILE STADIUMS.**

Equal Contact

Professional Pesticide-Free Insect Trapping formula.

Ref: 3935 5 litres



SAFE TO PLANTS
CAN BE USED IN OUTDOOR MOSQUITO
CONTROL PROGRAMS

Characteristics

eQual Contact is an advanced pesticide-free with no active ingredients that works through a physical mode of action, eliminating pests on contact without chemical toxicity. Designed to support modern, sustainable, and resistance-free pest management programs.

Mode of Action

eQual Contact provides a dual-action control for professional results:

- Eliminates adult pests
- Eliminates juvenile stages (eggs and larvae)

By acting on all life stages, eQual Contact helps break the pest life cycle, reducing reinfestation pressure and callback frequency.

Key Advantages

- Controls all life stages
- Ovicidal & adulticidal action
- Chemical-free pest control
- No resistance development
- Physical mode of action
- Fully biodegradable formula
- No microplastics
- Zero toxic residues
- Plant-safe / non-phytotoxic
- Indoor & outdoor use
- Mosquito control approved
- Odorless & non-staining
- Non-silicone formulation
- Misting and ULV application compatible
- IPM-ready solution
- Low-impact professional control
- Now available in a Concentrated professional format

eQual Contact is effective against multiple pests and life stages:

- Cockroaches – adults, eggs, and oothecae
- Bed bugs – adults and eggs
- Fleas – adults, eggs, and larvae
- Stink bugs – all stages
- Dermanyssus gallinae (red poultry mite) – all stages
- Mosquitoes (outdoor control) – safe application around plants and treated surfaces



NEW

Concentrated liquid Insects



**INNOVATIVE
SOLUTION**



**IMMEDIATE
ACTION**



**HIGHLY
EFFECTIVE**



100%
BIODEGRADABLE

**CONTROLS ADULTS AND
EGGS OF COCKROACHES
AND BED BUGS**

**RECOMMENDED FOR
PLANT-SAFE, POISON-FREE
MOSQUITO CONTROL**



Pyrenat DT

Total Release Aerosol Insecticide

Ref: 3788

12x
250ml



Characteristics

PYRENAT DT is a Total-release aerosol for complete treatment of enclosed spaces.
Effective against both flying and crawling insects.
Powerful knockdown action with natural pyrethrins.
Ideal for garages, storerooms, and unfrequented rooms.

How to use

Application of the product using a total discharge valve in private garages, storage rooms and rarely used rooms.

DOSAGE: Place the dispenser system no less than 1.80 m above the ground, in such a position that the spray is directed away from people.
For *Ephestia kuehniella* and *Lasius niger*: 150 mL/30 m³.
For *Plodia interpunctella*, *Culex pipiens* and *Aedes albopictus*: 150 mL/65 m³.

Composition

Pyrethrum Extract of open, mature flowers of *Tanacetum cinerariifolium* (*Chrysanthemum cinerariaefolium*) bitter tasting substance, Food ingredients q.s.p.)

0.067%

Environmental health registration 24-30-12380

Reentry period Recommended: 12 hours



Pyrenat Avispas

Insecticide Spray

Ref: 3783

12x
600ml



Characteristics

PYRENAT AVISPAS is an insecticide suitable for controlling wasps. High impact and knockdown effect. Product with natural pyrethrins. Insecticide in aerosol form for direct use.

How to use

Aerial spraying of the product directed at the upper corners of the enclosure to combat flying insects, avoiding direct spraying of objects and spraying on the wasp nest.

DOSAGE: Apply at a rate of 2 seconds of spray against wasps or 5 seconds of spray per nest.

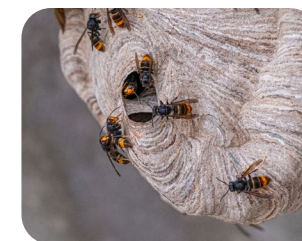
Composition

Pyrethrum (Extract of open, mature flowers of *Tanacetum cinerariifolium* (*Chrysanthemum cinerariaefolium*) bitter tasting substance, Food ingredients q.s.p.)

0.067%
100%

Environmental health registration 25-30-12511

Reentry period Recommended: 12 hours



Aerosol applicator:
Ref. 3140



130

Extension pole:
Ref. 3134



130



Pyrenat EC

Emulsifiable concentrate insecticide

Ref: 3784



Characteristics

PYRENAT EC is a concentrated liquid insecticide designed for the control of crawling and flying insects, including flies, mosquitoes, and cockroaches. Its active ingredient - pyrethrum, a Chrysanthemum extract (*Tanacetum cinerariifolium*), delivers a strong knockdown effect and high mortality.

Composition

Pyrethrum (Extract of open, mature flowers of *Tanacetum cinerariifolium* (*Chrysanthemum cinerariaefolium*) bitter tasting substance, Food ingredients q.s.p.)

2.50%

How to use

Environmental Use

Indoors: Apply as a localized spray of the diluted product on surfaces, skirting boards, and floors to target crawling insects. **Outdoors:** Apply the diluted product by spraying in areas around buildings, such as porches, terraces, and similar spaces. **Dosage:** Dilute the product at 4% in water and apply at a rate of 1 liter of prepared solution per 10 m² of surface.

Food industry

Localised spray application of the product diluted in water to surfaces, skirting boards and floors. Do not apply by aerial spraying or on surfaces where food is handled.

DOSE: Dilute the product at 4% in water and apply at a rate of 1 liter of prepared solution per 10 m² of surface.

Biocide registration

Environmental: 24-30-12386 / Food Industry: 24-30-12386-HA

Reentry period

Recommended: 12 hours



Pyrenat
by mylva

**NATURAL PROTECTION
, REAL INNOVATION**

**THE POWER OF PLANTS
IN EVERY FORMULA**





MasterTrap Pine
by mylva

**PROCESSIONARY
CATERPILLAR TRAP**

NEW

Master Trap Pine®

Trap for pine processionary caterpillars

Ref: 3930

Pack of 3 necklaces

+ Easy
+ Quick
No tools required!

Characteristics

Mastertrap Pine® is a trap for pine trees that creates a barrier around the trunk. The deflector directs the caterpillars towards a tube that leads to a collection bag with filling material, preventing contact with people and wildlife. It is a non-chemical solution that is easy to assemble and reusable after rinsing with water.

When the caterpillars descend in single file down the trunk, the collar diverts them into a conduit that ends in the collection bag. There they are confined with soil and leaves, minimising the risk of dispersal of stinging hairs.

Applications

Remove the protective plastic from the deflector.

Smooth the bark if necessary (using a sickle, hoe or other similar tool on old trees with deep roughness).

Prepare the bag with topsoil and leaves according to infestation:

Low (≤ 10 nests): fill to level 1.

High (> 10 nests): fill to the maximum level.

Position and adjust the deflector: place the end with the "female" slots at the chosen height and wrap it around the trunk to the first anchor point.

Repeat the adjustment and tighten 1–2 additional slots for maximum adhesion.

Install in a place that is inaccessible to people and animals.

Insert the tube into the collection bag.

Secure the ties from the bag to the holes in the collar.

Installation complete.

Safety and proper use

The stinging hairs can cause irritation or injury through direct contact or airborne dispersal : wear clothing, gloves and goggles.

Place the trap more than 3 m away and in an inaccessible area. Do not open the bag once installed unless necessary and do so with caution.

Keep the trap in place for at least 3 weeks after the last processions.

Tree compatibility

Designed for pine trees with a circumference ≤ 1.80 m.

For larger trees, attach two traps by joining the 'male' and 'female' parts, fitting them securely to the trunk and attaching the bag to the second trap.

Maintenance

In cases of heavy infestation, it may be necessary to replace the bag.



INSTALLATION VIDEO



Thermicide

by mylva



DETECTS THE SOURCES
AND FACILITATES **PEST CONTROL**

Thermicide®

Instant pest monitoring & control tool

Ref: 3690 Briefcase kit

1 gun + 2 rechargeable torches + 1 USB-C charging cable + 2 gas containers + instructions

Characteristics

PHYSICAL control system (no biocides or chemicals).
Green and safe technology;
Easy to use and operate.
No possibility of resistance/adaptation.
Affects all stages of the insect's life cycle.
Compatible with other subsequent control measures.
Inspection; Instant mobilisation of insects due to the effect of CO₂ and heat.
Optimisation of effective time.
Low cost of use. Each cartridge lasts for 8 hours of continuous use.
Torch: It has 3 modes: strong light, soft light and flash. Preferably use the soft light for longer battery life.
Recharges with the supplied USB/USB-C cable.
Each unit comes with 2 rechargeable torches.

Benefits

EFFECTIVE: Instant response based on CO₂ + Heat + Air = fast insect emergence.
PRACTICAL: Compact, robust, and designed for everyday use by pest control pros.
FAST: Detects infestation hotspots quickly and allows for immediate physical control.

How to Use?

It should be applied about 20 cm from the area to be treated, using a slight back-and-forth motion to avoid burning the surfaces. Bear in mind that heat rises; the hottest point of the CO₂ jet is about 5 cm above the theoretical straight point.

Always use the torch and keep the spare torch charged at all times.

Always carry a spare gas cartridge.
Before storing the equipment in the case, wait a few minutes for it to cool down.

Precautions

The outer carbon fibre tube reaches high temperatures; avoid direct contact and accidental contact with other surfaces at all times.
Read the instruction manual carefully.

Case content

CO₂ gun
2 rechargeable torches
USB-C cable
2 gas container
Users' manual

Dimensions

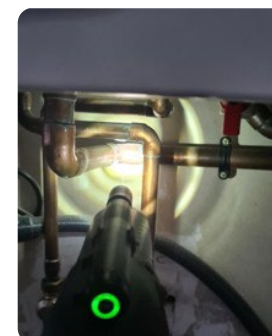
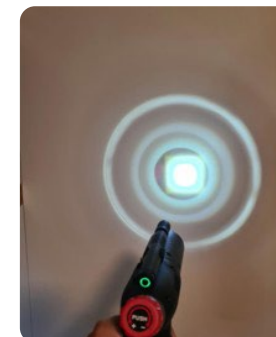
Height: 38 cm
Width: 20 cm
Total Weight: 600 g



DETECT, DECIDE & ACT.
INSTANTLY!

Identify
Infestation Levels
Instantly

WITHOUT
BIOCIDES



PERFECT MATCH
USE IT WITH
EQUAL CONTACT
PHYSICAL SPRAY

See page 17.

Tripod Position





Master Trap Bag Wasps

Wasp trap

Ref: 3203 Master Trap Bag

Ref: 3651 Kit (2 Master Trap Bags + 10 attractant Plus)



Capacity up
to 1 litre

REUSABLE

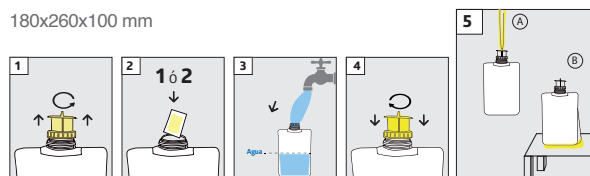


Characteristics

RE-USABLE trap for catching flying insects.
The kit includes 100% natural bait specific for wasps in
easy to use water-soluble bag format.
Can be used hanging or standing on a flat surface.
Dosage according to the degree of infestation.

Dimensions

180x260x100 mm



Water Soluble Magnet Wasps

Attractant for Master Trap bag /Master Trap Cube

Ref: 3650

Kit of 10 units x 35g

RECOMMENDED
VESPULA / POLISTES



Master Trap Bag Flies

Fly trap

Ref: 3203 Master Trap Bag

Ref: 3336 Kit (2 Master Trap Bags + 10 attractant Plus)

Characteristics

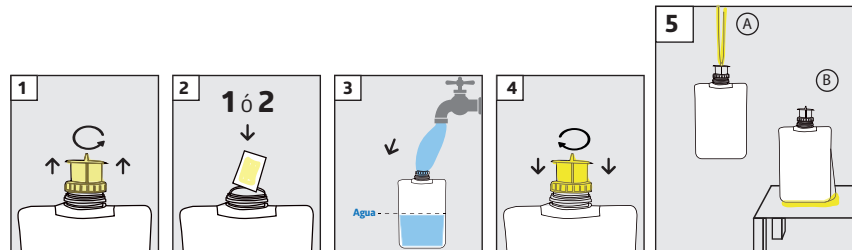
REUSABLE trap to capture flies.
The kit includes a 100% natural attractant attractive to flies provided within an easy-to-use water soluble bag.
Capacity of up to 15,000 catches.
Can be used on flat surfaces or in a hanging position.
Dosage according to degree of infestation.

Dimensions

180x260x100 mm

NOW MORE EFFECTIVE
IMPROVED FORMULA

Capacity up
to 1 litre



Magnet Flies

Attractant for Master Trap Bag / Master Trap Cube

Ref: 3333 Attractive

7,21€/kit

Kit of 10 units of 15g

Composition

D-Fructose 8%

Biocide registration

EU-0032488-0001



Master Trap Cube

Trap to capture flying insects

Ref: 3335 MT Cube 1 unit

Ref: 3303 Lid 1 unit

Ref: 3304 Cones 6 units

Characteristics

Trap to capture common flies and wasps (over 100,000 insects) a patented entrance system that allows insects to enter easily but prevents their exit. With special patented conical nets that do not let flies escape once they have entered. With 6 conical entrances and an 11.8 litre capacity.

It is recommended to position a trap every the traps every 15-25 metres in a distance of 5-15 metres away from the building and at a height of between 1 and 2 metres. Control every 4-6 weeks. Use 1 Kit of MAGNET attractant.



Capacity up to 6 litres

Drosophila Magnet Kit

Fruit fly trap (*Drosophila* spp.)

Ref: 3933

Kit: 1 trap + 10 water-soluble bags

Characteristics

The reusable trap for catching *Drosophila* spp. is compact (9 cm x 24 cm) and easy to use. For activation use 2 water soluble bags with fruit fly attractant and add 200 ml of water. As it lasts up to 4 weeks offers an effective and environmentally-friendly elimination of fruit fly infestation. Protect your space in a simple and sustainable way!



Magnet Drosophila

Natural attractant for *Drosophila* spp.

Ref: 3701

Pack: 10 units of 15g water-soluble pouches in zip bag

Composition

D-Fructose 1%

Authorization EU-0032488-0000 1-2



Funnel Trap

Trap for capturing flying insects

Ref: 3210

1 unit

Characteristics

Sturdy plastic trap for capturing flying insects by placing the specific attractant in the compartment located at the top.

Dimensions

160x220mm



Insect Trap

To capture flying insects

Ref: 3264

36 units



Dimensions

Ø 182x155 mm

Magnet Silverfish Trap

With attractant gel

2 trap + 2 capsules

Dimensions

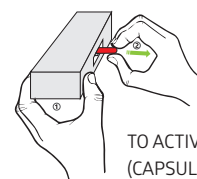
New silverfish attractant gel trap.
(*Lepisma saccharina*, adults and nymphs)
The new reusable capsule trap replaces single-use sticky traps.

Composition

D-Fructose 6%

Authorization

EU-0030315-0000



TO ACTIVATE THE TRAP
(CAPSULE)



CAPSULE



Magnet Silverfish

Silverfish attractant kit with a bait

Ref: 3050

Kit: 2 tubes of 30g | 80 traps | 2 applicator nozzles

Characteristics

Cardboard trap, with food attractant bait specific for silverfish (Lepisma).

The natural origin gel bait, is applied with an applicator gun.

Increases the efficiency of the traps due to high attractivity of the bait attract and capture.

This trap has been specifically designed to align with and accommodate the behavioral characteristics of silverfish.

The interior of the trap is black reflecting silverfish natural preference for resting in dark environments.

The trap is mimicking insect's natural preference for hiding in cracks and narrow spaces.

Insects attracted to a trap become immediately trapped by the inner adhesive surface.

Aplicaciones

Apply 0.2 grams (5-6 spots) of food bait to the upper part of each trap.

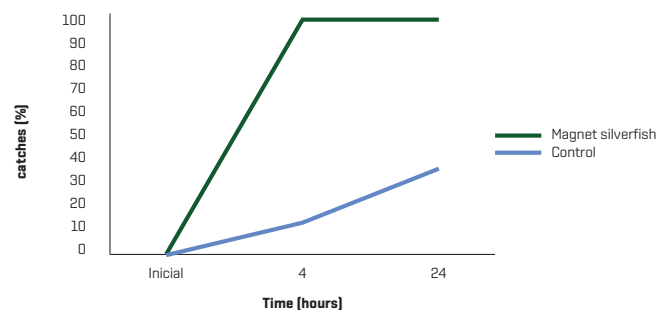
Composition

D-Fructose

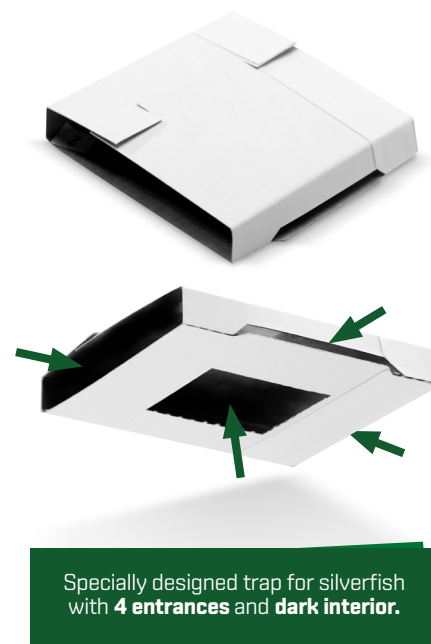
6%

Authorization

EU-0030315-0000



▶ See assembly instructions



To be used with a Bait Gun: Ref: 3131



p.122

BEDEFENDER PLUS

To sleep peacefully

BEDEFENDER® PLUS



Bedefender Plus

Mattress covers with anti-bed bugs materials

Characteristics

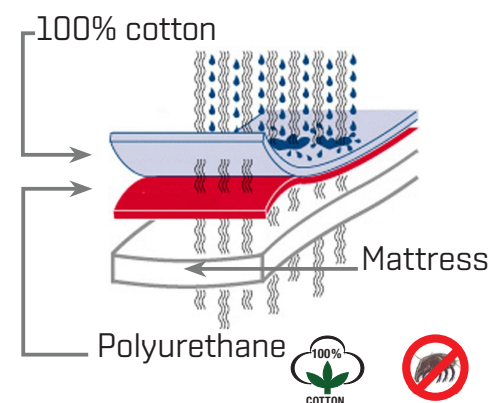
Ultra soft, waterproof and breathable.
Equipped with zip closure, waterproof.
100% microfibre fabric with anti-mite treatment Acarsan (R) (internal coating).
100% polyurethane internal coating.
Anti-mite, anti-parasite and anti-bed bugs barrier.
Adaptable to mattresses of up to 28 cm in height.

TOTAL ANTI-MITE TREATMENT

Dimensions	Ref.
80x190 cm	3714
90x190 cm	3705
90x200 cm	3715
105x190 cm	3712
120x200 cm	3713
135x200 cm	3724
140x190 cm	3729
150x200 cm	3725
160x200 cm	3726
180x200 cm	3727



Waterproof / Breathable



SYSTEM CERTIFIED BY THE UNIVERSITY OF NAVARRA

Certified by the entomology laboratory that proves that our covers have a complete barrier against mites, bedbugs and other mattress insects. In addition they are waterproof and protect mattresses from liquids and stools caused by incontinence, keeping them dry but allowing for breathability.



Bedefender Plus

Pillow covers with anti-bed bugs materials

Ref: **3708**

1 ud

Dimensions

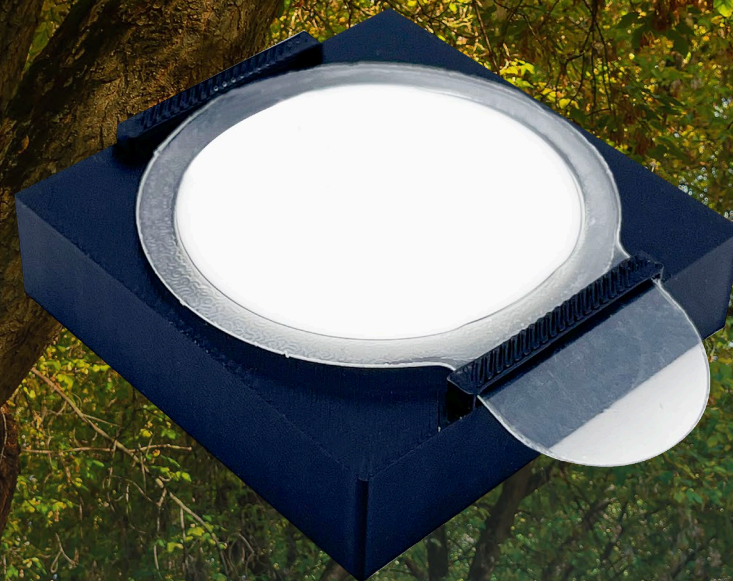
90x45 cm



CUSTOM SIZES
AVAILABLE



ëQual EnviroCare
by mylva



**THE ASSISTANT
FOR RODENTICIDES**

LESS WASTE, FEWER RISKS

ëQual Envirocare

Adjuvant to reduce the risk of secondary intoxication

Ref: 3938

COMING SOON

What is it?

ëQual EnviroCare® is an adjuvant used in rodent control programmes, together with anticoagulant rodenticides, to optimise the overall effectiveness of rodent management programmes and help reduce bait shyness. It promotes faster feeding cessation and contributes to the reduction of anticoagulant residues in rodent carcasses.

It helps reduce the risk of secondary poisoning in non-target species.

Characteristics

Achieve faster and more reliable results

Optimises the feeding behaviour of rodent populations, which helps to shorten treatment time and improve control consistency.

Improve customer satisfaction

It delivers visibly cleaner results, with less carcass residue and less environmental impact, reinforcing your professional reputation.

Simplify operations in the field

Works easily with any standard bait station configuration; no need to change equipment or handle bait additionally.

Increases bait effectiveness and reduces bait aversion

It promotes better bait acceptance and reduces waste, helping you to get more out of every gram of product used.

Improve the security profile

It helps reduce chemical residues in treated areas, promoting safer conditions for people, pets, and non-target wildlife.

Strengthen regulatory compliance and sustainability

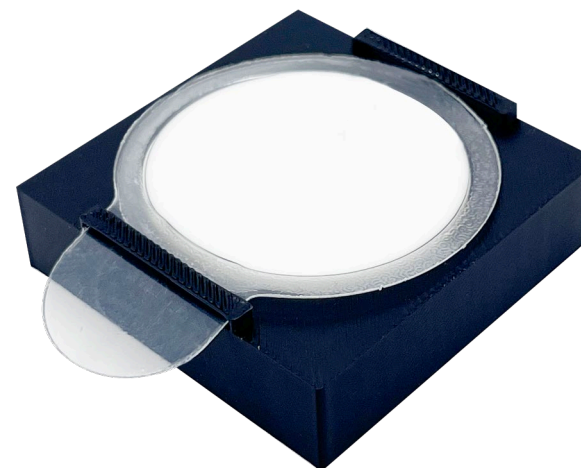
Designed to comply with modern EU standards on environmental responsibility and integrated pest management.

Professional reliability

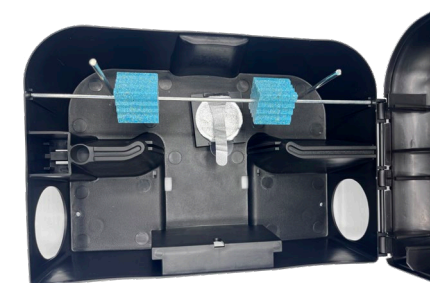
Developed specifically for pest management operators who require effective, compliant, high-performance tools in the field. By helping reduce residue levels and supporting more efficient rodenticide outcomes, it delivers meaningful value to pest control professionals, distributors, and wildlife protection stakeholders alike.

Areas of use

Indoor and outdoor use.
Around buildings, industrial facilities, farms, warehouses, food storage areas, etc.



NEW



Target rodents

Brown rat (*Rattus norvegicus*)
Black rat (*Rattus rattus*)
House mouse (*Mus musculus*)

Instructions for use

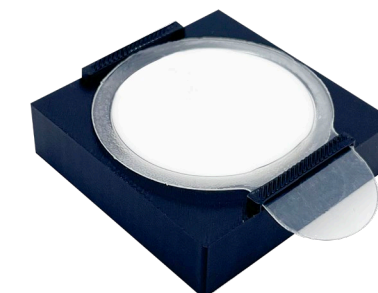
Use in a separate feeder, placed next to the rodenticide bait stations.
Use only one Adjuvant feeder (500 ml) for every 100 g of rodenticide bait placed in the bait station.
Place the Adjuvant feeder near the rodenticide bait, only inside the bait station.
Refill regularly to maintain availability throughout the treatment period.

Safety and precautions

Do not mix the product directly with the bait unless specifically authorised.
Avoid release into the environment.
Keep out of reach of children, pets and non-target wildlife.
Dispose of the product and packaging in accordance with local regulations.



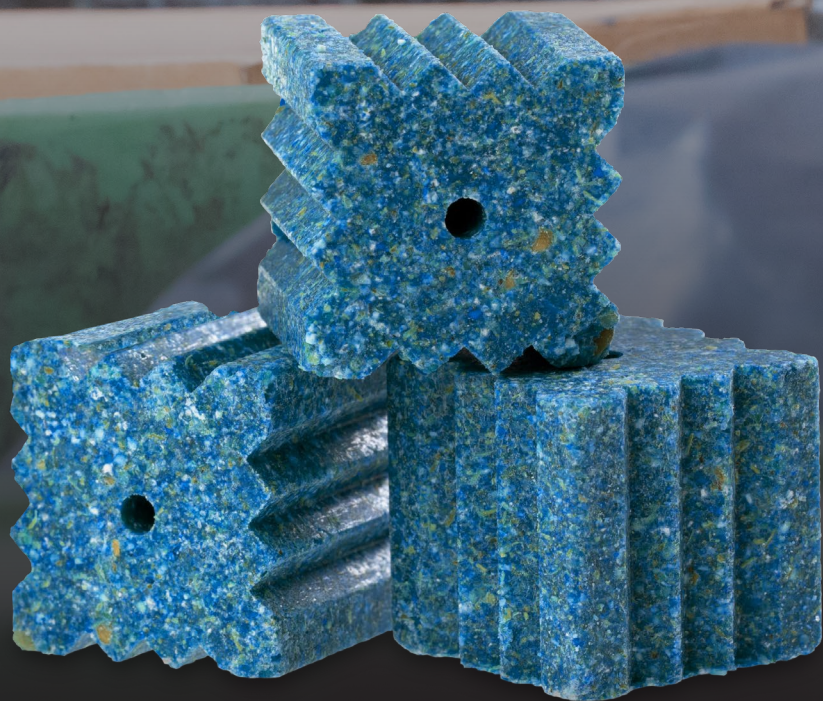
We help the
Eagle Owl (*Bubo bubo*)



Includes 5 double-sided adhesives
to attach the bait holder

K.O. RAT

THE **OK** SOLUTION



K.O. RAT
La solución

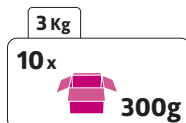
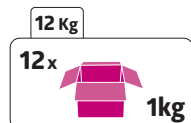
K.O. Rat Brodifacoum

20g block for trained professional

Ref: 3766 12kg (50ppm)

Ref: 3767 12kg (25ppm)

Ref: 3764 3kg (25ppm)



Characteristics

Block formulated with a mixture of various cereals of different grain sizes. **It incorporates highly palatable and attractive food ingredients for rodents**, even in the presence of other food sources. Multiple edges to satisfy the gnawing needs of rats and mice. Long-lasting block due to its high toughness and resistance to moisture (not submersible in water) and microbiological contamination.



- **Lower volume**, optimised storage storage.
- Shrink wrapping: **Less product** loss due to friction.
- Better **storage stability**, individual one kilogram (2.2 lbs.) packaging
- **Logistics space management** - the one kilogram (2.2 lbs.) pack has its own label, enabling easy individual delivery to technicians without the need to transport the heavy outer case, thus improving the logistics management.
- **Optimised waste management** by only requirement to manage the plastic from the shrink-wrap of each individual pack.
- **Less use of plastics** = lower carbon footprint.



12Kg



3Kg

Applications

Place between 50-200 grams in correctly labelled bait stations. Apply inside fixed or mobile facilities and means of transport.

Composition

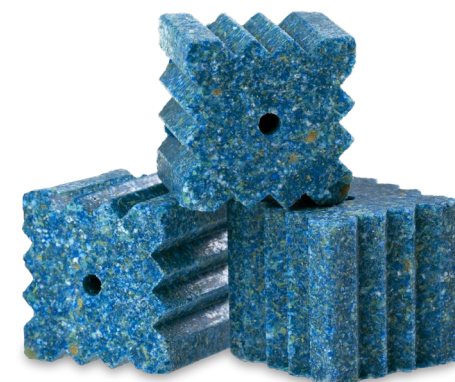
Brodifacoum	0,005% / 0,0025%
Bittering substance	0,001%
Food ingredients q.s.p.	100%

Biocide registration

ES/MR(NA)-2018-14-00260 (50 PPM)
ES/BB(NA)-2018-14-00539 (25PPM)
PT/DGSBBP-122/2019 (25 PPM)

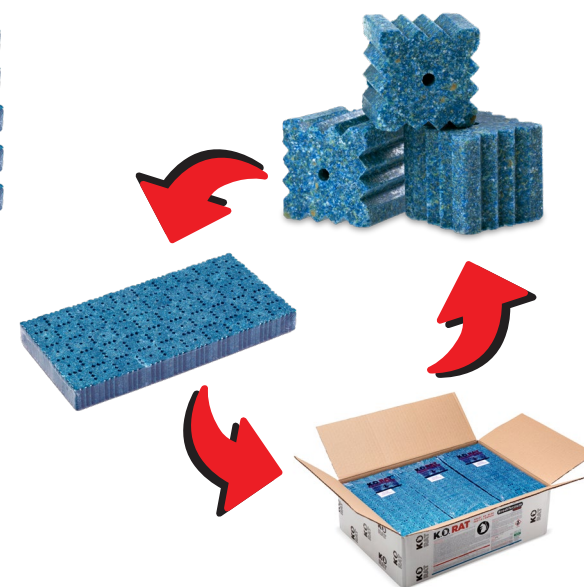
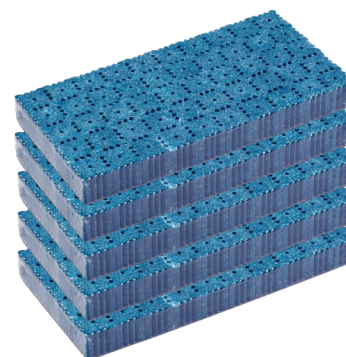
Reentry period

None



Less Plastic

Packaging optimisation
+ Product
- Space



K.O. RAT

THE **OK** SOLUTION



K.O. RAT
La solución

K.O. Rat Gel Bromadiolone

Rodenticide Gel Formulation

Ref: 3770

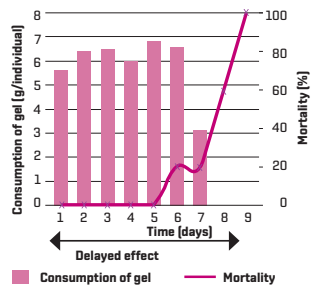
ATTENTION
50 PPM

24x
300g



Characteristics

Rodenticide gel provided in a plastic tube for easy and convenient application and precise dosing into bait stations. Its high palatability and unique texture ensure it remains attractive for extended periods, whilst also being stable across various temperatures and resistant to moisture as well as bacteria and fungal growth. No special handling requirements are needed as it is a non-contact formulation.



Study carried out at **CERETOX** (Centre de Recerca en Toxicologia) of University of Barcelona, on rats in presence of alternative food.



Dosage

Apply between 50 and 100 grams of product into bait stations every 5-10 metres depending on target species (mice or rats). every 5-10 metres.

Composition

Bromadiolone	0,005%
Bittering substance	0,002%
Food ingredients q.s.p.	100%

Biocides Registration ES/BB(NA)-2018-14-00454

Reentry period None

To be used with Gun: Ref. 3139 / 3135



127





Platform

The Khepriot platform integrates **KhepriotGo** for field technicians and **KhepriotWeb** for administrative staff, creating a digital ecosystem that connects operations and data in real time.

Web

It includes all functionalities when the number of sensors, clients, and users increases, which is relevant for its management.

Application

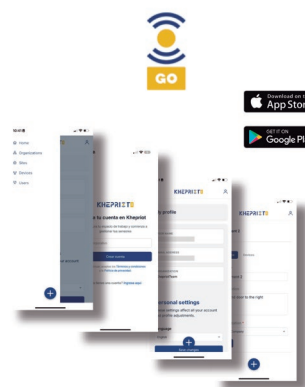
Primarily used by operators in the field. Basic operational feature.

powered by **aws**

AWS is the most comprehensive and widely used cloud platform worldwide, with over 200 services available in global data centres. Millions of organisations—from innovative start-ups to large corporations and government entities—rely on AWS to strengthen security, gain agility, and drive innovation.

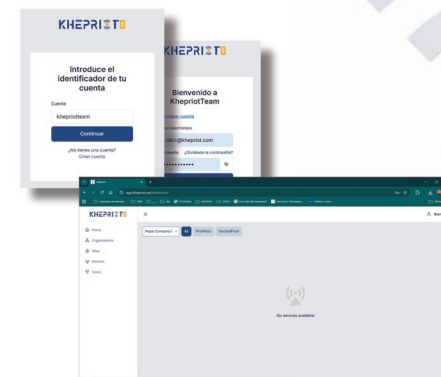
APP

KHEPRIOT GO



WEB

<https://app.khepriot.net/>



Beneficios

Financial Savings

Fewer visits to customer locations (through remote monitoring)
Lower maintenance costs thanks to automatic event detection

User experience

Enhanced customer experience with real-time positive data. Better decision-making through automated analytics.

Energy efficiency

Optimised technology for minimal consumption, longer battery life and lower maintenance costs.

Easy Integration

With **KhepriotGo®**, connect and manage your **KhepriotEye®** sensors quickly and securely, optimising operation from day one.

KhepriotRat®

IoT sensor for rodent detection

NEW

Ref: 3000 Khepriot Rat

KHEPRIOT RAT

What is it?

KhepriotRat® is a specialised IoT sensor for detecting rodents in environments where remote and automated monitoring is required.

Characteristics

Secure and Connected Ecosystem	Khepriot® combines KhepriotGo® and KhepriotWeb® in a platform that connects operations and data in real time with maximum security. All communication is protected with advanced encryption, role-based access control, and comprehensive auditing on AWS infrastructure, ensuring confidentiality and integrity in industrial environments.
Activation	The KhepriotRat® sensor is activated by a pressure mechanism located at the base of the device. This system ensures a rapid and effective response upon detection of movement or the presence of rodents.
System Sleep mode	The KhepriotRat® sensor remains in standby mode and is activated only when it detects a positive result, immediately sending the information to the Khepriot® platform and ensuring a rapid and efficient response.
Model	The KhepriotRat® model is designed to offer reliability in rodent detection, ensuring superior performance and continuous connectivity for real-time data transmission.

Technical details

Battery life	The KhepriotRat® sensor offers a battery life of up to two years, thanks to its innovative sleep mode system, ensuring reliable operation without frequent interruptions for maintenance.
Connectivity	Equipped with a stable WiFi connection, the KhepriotRat® sensor guarantees real-time data transmission for immediate alerts and monitoring.
Highlights	Important features such as low maintenance requirements and high reliability position the KhepriotRat® sensor as a leading choice in the competitive pest detection market, improving overall customer satisfaction.



Measures
KhepriotRat®
162x79x65mm



Positive captures

Technical Operation and Benefits

Connectivity	Image Capture	Data Transmission	Instant data
The sensors connect to the customer's WiFi network via Bluetooth.	Images and data are automatically updated on the Khepriot® platform for centralised management.	Protected with AWS technology, offering maximum security and operational stability.	Check all the information directly in the KhepriotGo® app, easily and securely.

Magnet Tablets Placebo

Food attractant for rodents in tablets

Ref: 3777

40 blisters packs x6 0.5g pills



Characteristics

Rodent attractant pills without active ingredient are designed for effective monitoring of rodent activity. These highly palatable pills remain stable over time, offering long-lasting effectiveness due to their resistance to moisture and stability across various temperatures. Attractant pills are ideal for use in snap traps and Live-catchers.

Dosage

Place one or two pills in each trap, positioning them near areas of rodent activity or pathways. Replace the pills when they are consumed.

NO NEED TO
TOUCH THE PRODUCT

Composition

Food ingredients q.s.p. 100%

Reentry period

None



Magnet Gel Rats

Gel food bait to attract rodents

Ref: 3092



6x
300g

Characteristics

Rodent monitoring gel designed to attract all types of rodents. This gel combines food-grade attractants, enhancing the capture efficiency of monitoring and adhesive traps. It remains effective for weeks, reducing the need for frequent control treatments. Environmentally friendly, it contains no active ingredients.

Dosage

Apply the Magnet Gel Rats monitoring gel to the central area of a snap, live-catching or adhesive trap, using a dose of approximately 20 grams for optimal results, whether for single or multiple captures.



Composition

Food ingredients q.s.p. 100%

Reentry period

None



To be use with Applicator Gun Extender: Ref. 3135

127

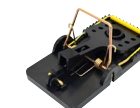
RECOMMENDED TO BE USED WITH:



3368



3211



3216

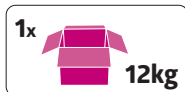


3217

Magnet Block Placebo

Blocks of approx. 20 g

Ref: 3074



Characteristics

Rodent monitoring block with no active ingredients. Designed for effective detection and monitoring of rodent activity

Dosage

Place in areas where you want to minimise the use of rodenticides.

Composition

Food ingredients q.s.p.

100%

Reentry period

None

Less
Plastic

Packaging Optimisation
+ Product
- Space



- **Lower volume**, optimised storage storage.
- Shrink wrapping: **Less product** loss due to friction.
- Better **storage stability**, individual one kilogram (2.2 lbs.) packaging
- **Logistics space management** - the one kilogram (2.2 lbs.) pack has its own label, enabling easy individual delivery to technicians without the need to transport the heavy outer case, thus improving the logistics management.
- **Optimised waste management** by only requirement to manage the plastic from the shrink-wrap of each individual pack.
- **Less use of plastics** = lower carbon footprint.



RECOMMENDED TO BE USED WITH:



3243



3218



3242



3279

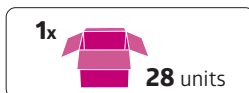


3213

Block Placebo Bait Station

With 20g placebo blocks

Ref: 3089



Characteristics

Plastic bait station for mice, ready to use, it includes 2 blocks of Magnet Block placebo monitoring bait.

Dimensions

90x34x94 mm

Composition

Food ingredients q.s.p.

100%

Reentry period

None

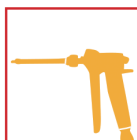


INSECTICIDE
FUNGICIDE

INSTRUCTIONS FOR USE



PAINTING/BRUSHING



INJECTION



PROJECTION



APPLICATIONS

	Treatment Curative	Intensive treatment	Preventive treatment
Wood-destroying beetles (such as Hylotrupes bajulus L)	250 g/m² (300 ml/m²)	552 ml/m² (Surface treatment of 300 ml/m² + Injection of 252 ml/m²)	200 g/m² (250 ml/m²)
Termites (Such as Reticulitermes spp.)			
Basidiomycete fungi (such as brown rot)			
Chromogenic fungi (such as blue mould)			

Serpogel II

Self-penetrating insecticide/fungicide

Ref: 3090

1x  20 L

Characteristics

Preventive and curative treatment of wood against woodworm, termites and xylophagous fungi. Use class 2.

Deep absorption gel for treating wood against insects and xylophagous fungi. Once applied, it is colourless and practically odourless. Serpol Gel II is very easy to use and spreads quickly and deeply through the wood.

Complies with standards: UNE-EN46-1, UNE-EN47, UNE-EN-1390, env1390, UNE-EN117, UNE-EN118, UNE-EN113 and UNE-EN152.

Authorised for use by spray/projection, brushing and injection (into pre-drilled holes).

USE CLASS 2: situation in which the wood is covered and not exposed to the elements (particularly rain and torrential rain) but where occasional, non-persistent moisture may occur.

Benefits

Ease of application: Does not drip, does not smell, does not evaporate

High penetration power in wood.

Excellent adhesion to wood.

Longer contact and diffusion time.

Excellent effectiveness.

No safety period or re-entry period.

Does not stain or alter the colour of the wood.

Compatible with any subsequent finish.

Non-flammable.

Composition

Permethrin	0,35%
Propiconazol	0,85%
IPBC	0,40%
Aliphatic hydrocarbon and excipients q.s.p	100%

Biocides Registration

ES/APP(NA)-2021-08-00790

DGAV Registration

PT/DGAV ARMPB08 - 3/2022

AMM Registration

FR-2023-0066

Reentry period

Treated wood may not be sold or used before the product has finished setting.

NO RE-ENTRY PERIOD.



New Serpol Basic

Self-penetrating insecticide

Ref: 3061



Characteristics	Preventive and curative treatment of wood against wood-boring insects. Use class 1. Deep-penetrating gel for treating wood against wood-boring insects. NEW SERPOL BASIC is very easy and convenient to use.	
Benefits	Does not run, does not give off odours, does not stain and does not alter the colour of the wood being treated. High penetration capacity into wood and diffusion once inside. No safety period or re-entry period. Can be finished a few days after application.	
Composition	Permethrin	0,35%
	Food ingredients q.s.p.	100%
Biocides Registration	ES/APP(NA)-2022-08-00791	
DGAV Registration	PT/DGAV ARMPB08-4/2023	
AMM Registration	FR-2023-0033	
Reentry period	Treated wood may not be sold or used before the product has finished setting. NO RE-ENTRY PERIOD.	



ADR



INSECTICIDE

INSTRUCTIONS FOR USE



PAINTING/BRUSHING



INJECTION

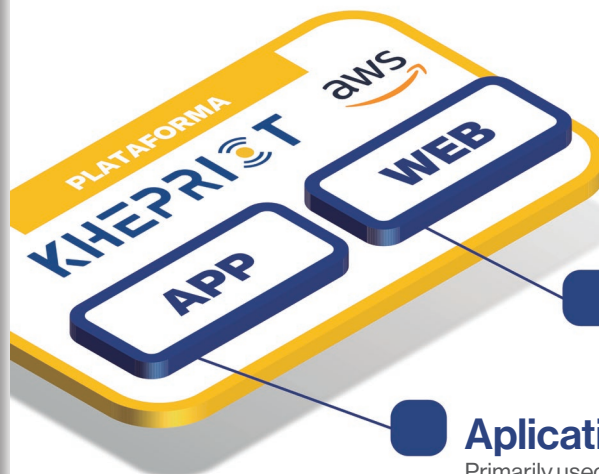


PROJECTION



APPLICATIONS

	WOODWORM	TERMITES
Preventive treatment	200 g/m ²	
Curative treatment	300 mL/m ²	
Intensive treatment	Injection of 252 ml/m ² in combination with superficial treatments	



Platform

The Khepriot platform integrates **KhepriotGo** for field technicians and **KhepriotWeb** for administrative staff, creating a digital ecosystem that connects operations and data in real time.

Web

It includes all functionalities when the number of sensors, clients, and users increases, which is relevant for its management.

Application

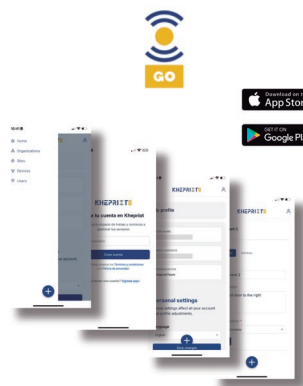
Primarily used by operators in the field. Basic operational feature.

powered by **aws**

AWS is the most comprehensive and widely used cloud platform worldwide, with over 200 services available in global data centres. Millions of organisations—from innovative start-ups to large corporations and government entities—rely on AWS to strengthen security, gain agility, and drive innovation.

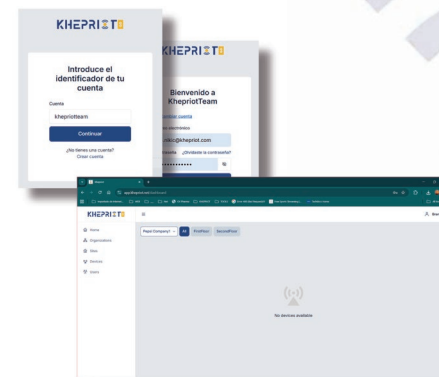
APP

KHEPRIOT GO



WEB

<https://app.khepriot.net/>



Benefits

Financial Savings

Fewer visits to customer locations (through remote monitoring)
Lower maintenance costs thanks to automatic event detection

User experience

Enhanced customer experience with real-time positive data. Better decision-making through automated analytics.

Energy efficiency

Optimised technology for minimal consumption, longer battery life and lower maintenance costs.

Easy Integration

With **KhepriotGo®**, connect and manage your **KhepriotEye®** sensors quickly and securely, optimising operation from day one.

KhepriotEye®

IoT sensor for insect detection

NEW

Ref: 3496 KIT 1 (Camera + Battery + USB-C Cable)

Ref: 3494 KIT 2 (Camera + USB-C Cable)

What is it?

KhepriotEye® is a device designed for intelligent pest control, with a more advanced approach to vision and continuous monitoring of insect traps.

KhepriotBat® is a rechargeable battery module designed specifically to power the **KhepriotEye®** device.

Characteristics

Secure and Connected Ecosystem	Khepriot® combines KhepriotGo® and KhepriotWeb® in a platform that connects operations and data in real time with maximum security. All communication is protected with advanced encryption, role-based access control, and comprehensive auditing on AWS infrastructure, ensuring confidentiality and integrity in industrial environments.
Activation	KhepriotEye® captures images every 24 hours by default, an approach that ensures continuous and accurate monitoring of insect saturation levels in light traps.
Continuous capture system	With the default programming, it captures images and uploads data to the Khepriot® platform before returning to standby mode. This optimises energy efficiency and operability.
Model	The KhepriotEye® model is designed to offer reliability in detecting flying insects, ensuring superior performance and continuous connectivity for real-time data transmission.

Technical details

Battery life	KhepriotEye® can be connected to the mains via a transformer using USB-C or, alternatively, operated using a battery. In this mode, it offers up to one year of autonomy, taking one photograph every 24 hours.
Connectivity	Equipped with a stable WiFi connection, the KhepriotEye® sensor guarantees real-time data transmission for immediate alerts and monitoring.
Highlights	Important features such as low maintenance requirements and high reliability position the KhepriotEye® sensor as a leading choice in the competitive pest detection market, improving overall customer satisfaction.

Technical Operation and Benefits

Connectivity	Image Capture	Data Transmission	Instant data
The sensors connect to the customer's WiFi network via Bluetooth.	Images and data are automatically updated on the Khepriot® platform for centralised management.	Protected with AWS technology, offering maximum security and operational stability.	Check all the information directly in the KhepriotGo® app, easily and securely.



KhepriotEye®

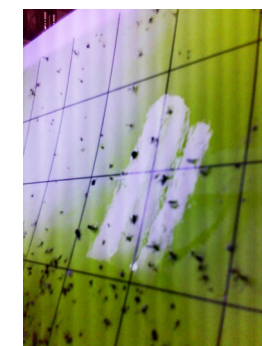


KhepriotBat®

USB-C cable
(10 cm)

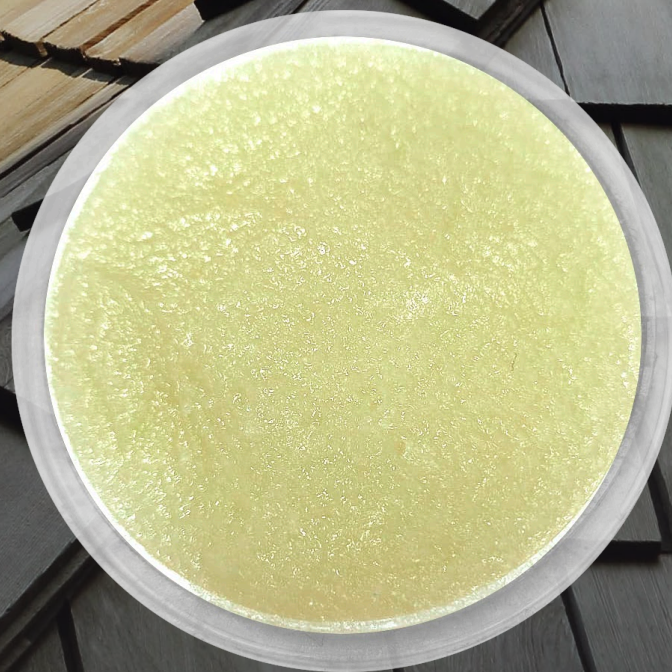
Measures KhepriotBat®
89x36x32mm

Measures KhepriotEye®
55,5x32x22mm

Omniveo light trap (Ref. 3180)
With USB-C cable. See page 110.

Positive captures

ëQualBirds®
by mylva



ROOFS AND TERRACES
FREE FROM BIRDS

ëQual BIRDS

Pigeon repellent

Ref: 3937 Pack ëQual Birds

24 ud

COMING SOON

What is it?

Viscous repellent applied to transparent saucers, designed to effectively and safely deter pigeons. Its formula combines garlic extract and peppermint oil, creating a multi-sensory effect that is unpleasant for birds but harmless to people, pets and the environment.

Characteristics

Yellow viscous gel.
Smell of garlic and peppermint oil.
Presented in recyclable plastic dishes.

Multi-sensory repellent: visual, olfactory, tactile and gustatory action.
Natural formula with garlic and peppermint oil extracts.
Safe for people, pets and the environment.
Long-lasting, highly resistant viscous texture.
Use in transparent saucers that do not alter the aesthetics of the environment.
Ideal for controlling pigeons and urban birds without causing them harm.
Product with immediate and sustained action.

Characteristics

The system operates through four complementary modes of action:

Visual

The shine and appearance of the product on the saucer make the birds distrustful.

Olfactory

The strong smell of garlic and mint repels birds (pigeons, seagulls, etc.).

Tactile

The viscous consistency causes discomfort on contact, preventing contact and settling.

Gustatory

If ingested, the unpleasant taste reinforces rejection and teaches the animal to avoid the area.

The first is visual. If they overcome this barrier, the unpleasant smell keeps them away. If they ignore the smell, the texture is unpleasant and they leave the area. If this does not work either, the taste of the gel is unpleasant.

It is highly resistant to environmental agents (wind, rain, etc.).

Application

It can be placed on all types of surfaces and structures. Install plates every 30 cm.

ëQualBirds®
by mylva



NEW

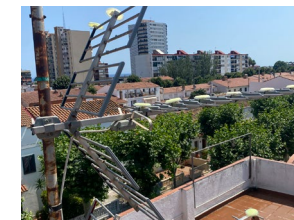
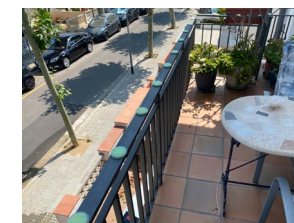


multimodal action
Visual | Olfactory | Tactile | Gustatory

**BALCONIES, ROOFS
AND ROOF TERRACES
KEPT FREE OF PIGEONS**



With adhesive backing
for cable ties.





Applicator Gun Apligel

Applicator gun for 40/80g tubes

Ref: 3130

1 ud

Characteristics

Gel applicator guns allow for precise and controlled distribution of the gel, optimising its effectiveness against pests such as cockroaches and ants.



Applicator Gun Mylva

Applicator gun for 40g tubes

Ref: 3131

1 ud

Characteristics

Mylva gun that facilitates precision in application, ensuring better treatment coverage, guaranteeing that the gel is applied exactly where it is needed, avoiding waste and maximising coverage.

Mylva Mechanical Applicator Gun

Applicator gun for up to 350g tubes

Ref: 3139

1 ud

Characteristics

Mechanical gun for effortless application of insecticide gels or gel lacquers and gel rodenticides.
Lightweight and compact, fits in even the smallest toolboxes.
Practical quick-change clamping system for 300-350g cartridges. Automatic anti-drip function prevents material loss.
Made of fibreglass-reinforced plastic. Automatic recoil.

Dimensions

360x195x90 mm



Applicator Gun Extender

For application of gels

Ref: 3135

1 ud

Characteristics

1-metre extension gun for applying gels in hard-to-reach places and/or high areas. Ideal for gels (insecticides or rodenticides) or gel-based lacquers packaged in 300-350 gram tubes, such as:

- Ecorex Gel One
- Ecorex Contact Gel
- K.O. Pasta Brodifacoum



Accessories For Guns

Nozzles & Gel Holders

Ref: 3133 Nozzle

25 units

Ref: 3197 Gel Holder

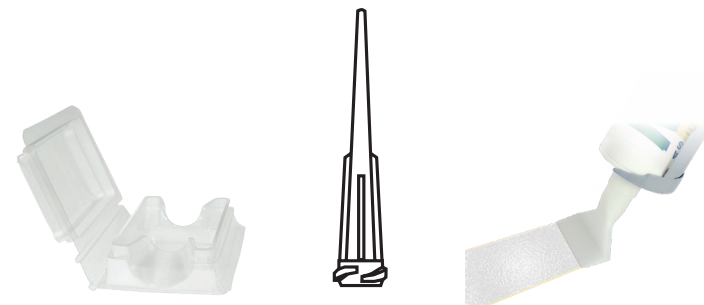
Bag of 120 units

Dimensions 62 x 42 x 17 mm

Ref: 3379 Application Nozzle

Bag of 120 units

Special pistol ref. 3139





Download Catalogue



**WE HOLD REGISTRATIONS
ACROSS THE GLOBE**

**A EUROPEAN COMPANY
EXPORTING TO OVER
30 COUNTRIES
PRESENT ON 5 CONTINENTS**

**STATE-OF-THE-ART
MANUFACTURING
FACILITIES**

DEVELOP YOUR OWN RETAIL BRAND WITH US

www.mylva.eu

Handwriting practice lines on the left side of the page, consisting of 20 horizontal dotted lines.

Handwriting practice lines on the right side of the page, consisting of 20 horizontal dotted lines.

Handwriting practice lines on the left side of the page, consisting of 25 horizontal dotted lines.

Handwriting practice lines on the right side of the page, consisting of 25 horizontal dotted lines.

Handwriting practice lines on the left side of the page, consisting of 20 horizontal dotted lines.

Handwriting practice lines on the right side of the page, consisting of 20 horizontal dotted lines.

For sale to Pest Control Professionals only

Contact:

www.mylva.eu

+34 93 415 32 26

export@mylva.eu

Follow us



mylva

MYLVA S.A.

Via Augusta, 48
08006 Barcelona

ISO 9001
BUREAU VERITAS
Certification



ISO 14064

BUREAU VERITAS
Certification



cepa